



Les conteneurs repris ci-dessous sont représentatifs des matériels utilisés le plus couramment par les différentes compagnies maritimes. Les dimensions indiquées correspondent aux dimensions « standards généralement constatées. Elles peuvent varier de quelques centimètres en fonction des compagnies, fabricant ou année de fabrication



STANDARD 20'

INSIDE LENGTH	19'4"	5.89 m
INSIDE WIDTH	7'8"	2.33 m
INSIDE HEIGHT	7'10"	2.38 m
DOOR WIDTH	7'8"	2.33 m
DOOR HEIGHT	7'6"	2.28 m
CAPACITY	1,172 ft ³	33.18 m ³
TARE WEIGHT	4,916 lb	2,229 kg
MAX. CARGO	47,999 lb	21,727 kg

INSIDE LENGTH
INSIDE WIDTH
INSIDE HEIGHT
DOOR WIDTH
DOOR HEIGHT
CAPACITY
TARE WEIGHT
MAX. CARGO

STANDARD 40'

39'5"	12.01 m
7'8"	2.33 m
7'10"	2.38 m
7'8"	2.33 m
7'6"	2.28 m
2,390 ft ³	67.67 m ³
8,160 lb	3,701 kg
59,040 lb	26,780 kg

HIGH CUBE 40'

39'5"	12.01 m
7'8"	2.33 m
8'10"	2.69 m
7'8"	2.33 m
8'5"	2.56 m
2,694 ft ³	76.28 m ³
8,750 lb	3,968 kg
58,450 lb	26,512 kg

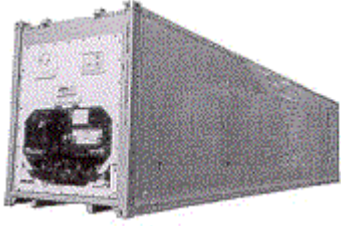


OPEN TOP 20'

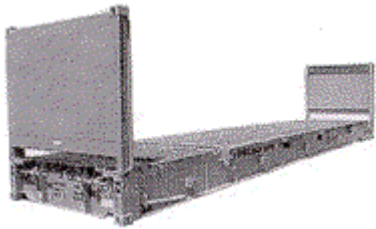
INSIDE LENGTH	19'4"	5.89 m
INSIDE WIDTH	7'7"	2.31 m
INSIDE HEIGHT	7'8"	2.33 m
DOOR WIDTH	7'6"	2.28 m
DOOR HEIGHT	7'2"	2.18 m
CAPACITY	1,136 ft ³	32.16 m ³
TARE WEIGHT	5,280 lb	2,394 kg
MAX. CARGO	47,620 lb	21,600 kg

OPEN TOP 40'

39'5"	12.01 m
7'8"	2.33 m
7'8"	2.33 m
7'8"	2.33 m
7'5"	2.26 m
2,350 ft ³	66.54 m ³
8,490 lb	3,850 kg
58,710 lb	26,630 kg



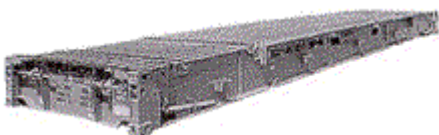
	REEFER 20'		REEFER 40'	
INSIDE LENGTH	17'8"	5.38 m	37'8"	11.48 m
INSIDE WIDTH	7'5"	2.26 m	7'5"	2.26 m
INSIDE HEIGHT	7'5"	2.26 m	7'2"	2.18 m
DOOR WIDTH	7'5"	2.26 m	7'5"	2.26 m
DOOR HEIGHT	7'3"	2.20 m	7'0"	2.13 m
CAPACITY	1,000 ft ³	28.31 m ³	2,040 ft ³	57.76 m ³
TARE WEIGHT	7,040 lb	3,193 kg	10,780 lb	4,889 kg
MAX. CARGO	45,760 lb	20,756 kg	56,276 lb	25,526 kg



	FLAT RACK 20'		FLAT RACK 40'	
INSIDE LENGTH	18'5"	5.61 m	39'7"	12.06 m
INSIDE WIDTH	7'3"	2.20 m	6'10"	2.08 m
INSIDE HEIGHT	7'4"	2.23 m	6'5"	1.95 m
TARE WEIGHT	5,578 lb	2,530 kg	12,081 lb	5,479 kg
MAX. CARGO	47,333 lb	21,469 kg	85,800 lb	38,918 kg



	FLAT RACK COLLAPSIBLE 20'		FLAT RACK COLLAPSIBLE 40'	
INSIDE LENGTH	18'6"	5.63 m	39'7"	12.06 m
INSIDE WIDTH	7'3"	2.20 m	6'10"	2.08 m
INSIDE HEIGHT	7'4"	2.23 m	6'5"	1.95 m
TARE WEIGHT	6,061 lb	2,749 kg	12,787 lb	5,800 kg
MAX. CARGO	61,117 lb	27,722 kg	85,800 lb	38,918 kg



	PLATFORM 20'		PLATFORM 40'	
INSIDE LENGTH	19'11"	6.07 m	40'0"	12.19 m
INSIDE WIDTH	8'0"	2.43 m	8'0"	2.43 m
INSIDE HEIGHT	7'4"	2.23 m	6'5"	1.95 m
TARE WEIGHT	6,061 lb	2,749 kg	12,783 lb	5,798 kg
MAX. CARGO	52,896 lb	23,993 kg	66,397 lb	30,117 kg